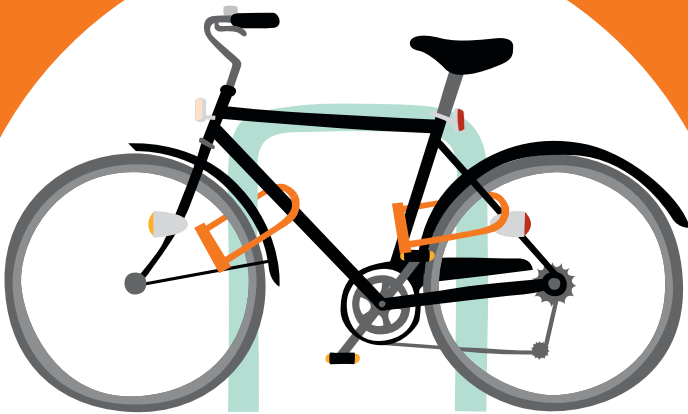


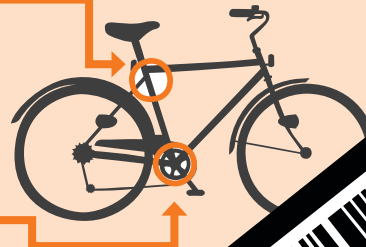
# LOVE YOUR BIKE?

Lock it  
& log it

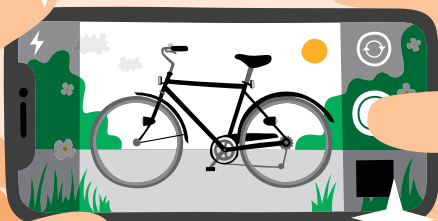


Lock the frame and both wheels to a secure stand: using two strong D-locks is ideal, with at least one securing the frame

Record your **frame number**. It's usually found on the bottom bracket or seat tube



Take some photos of your cycle including any unique features



Register your cycle at [bikeregister.com](http://bikeregister.com)  
- if it's not registered, the police are unlikely to be able to help you recover it

Keeping your cycle safe: [www.camcycle.org.uk/cycletheft](http://www.camcycle.org.uk/cycletheft)  
Report stolen cycles: [www.cambs.police.uk/report](http://www.cambs.police.uk/report) or call 101



SAVE OUR  
CYCLES

CAM  
CYCLE



Creating a safer  
Cambridgeshire