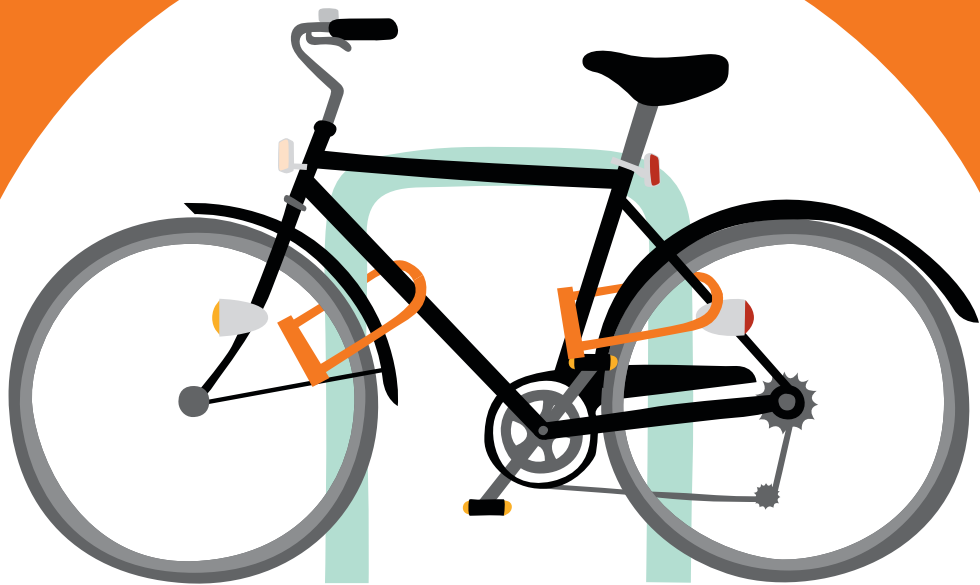


LOVE YOUR BIKE?

Lock it
& log it



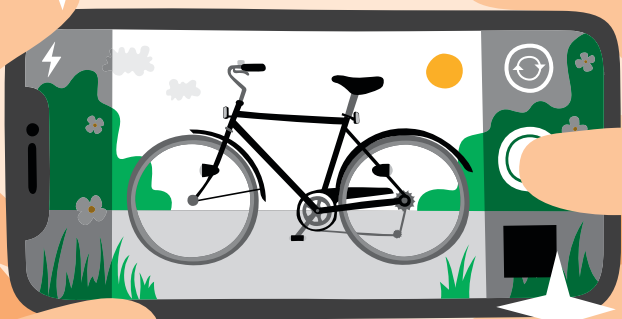
Lock the frame and both wheels to a secure stand: using two strong D-locks is ideal, with at least one securing the frame

Record your **frame number**. It's usually found on the bottom bracket or seat tube



CAM021B1234E

Take some photos of your cycle including any unique features



Register your cycle at bikeregister.com
– if it's not registered, the police are unlikely to be able to help you recover it

Keeping your cycle safe: www.camcycle.org.uk/cycletheft
Report stolen cycles: www.cambs.police.uk/report or call 101



SAVE OUR
CYCLES

CAM
CYCLE

