

**ATKINS**<sup>TM</sup>

NOTES:  
REFERRED TO IN PARAGRAPH  
3.1.1.d AND 3.1.2.d

**SAFETY, HEALTH AND ENVIRONMENTAL INFORMATION**  
IN ADDITION TO THE HAZARDS/RISKS NORMALLY ASSOCIATED WITH THE TYPES OF WORK  
DEFINED ON THIS DRAWING, NOTE THE FOLLOWING SIGNIFICANT RESIDUAL RISKS:  
CONSTRUCTION  
MANUAL HANDLING OF KERBS NOT PERMITTED  
MAINTENANCE/LEANING  
NONE  
USE  
NONE  
DECOMMISSIONING/DEMOLITION  
MANUAL HANDLING OF KERBS NOT PERMITTED

Rev	Description	By	Date	chk'd	Auth
A	FOR INFORMATION	BW	08/09	PB	RLB
A	ORIGINAL ISSUE	BW	08/09	PB	RLB

**Atkins Limited**  
Consulting Engineers,  
Wellbrook Court  
Gilton Road  
Cambridge  
CB3 0NA  
Tel: (01223) 276002  
Fax: (01223) 277529  
www.atkinsglobal.com

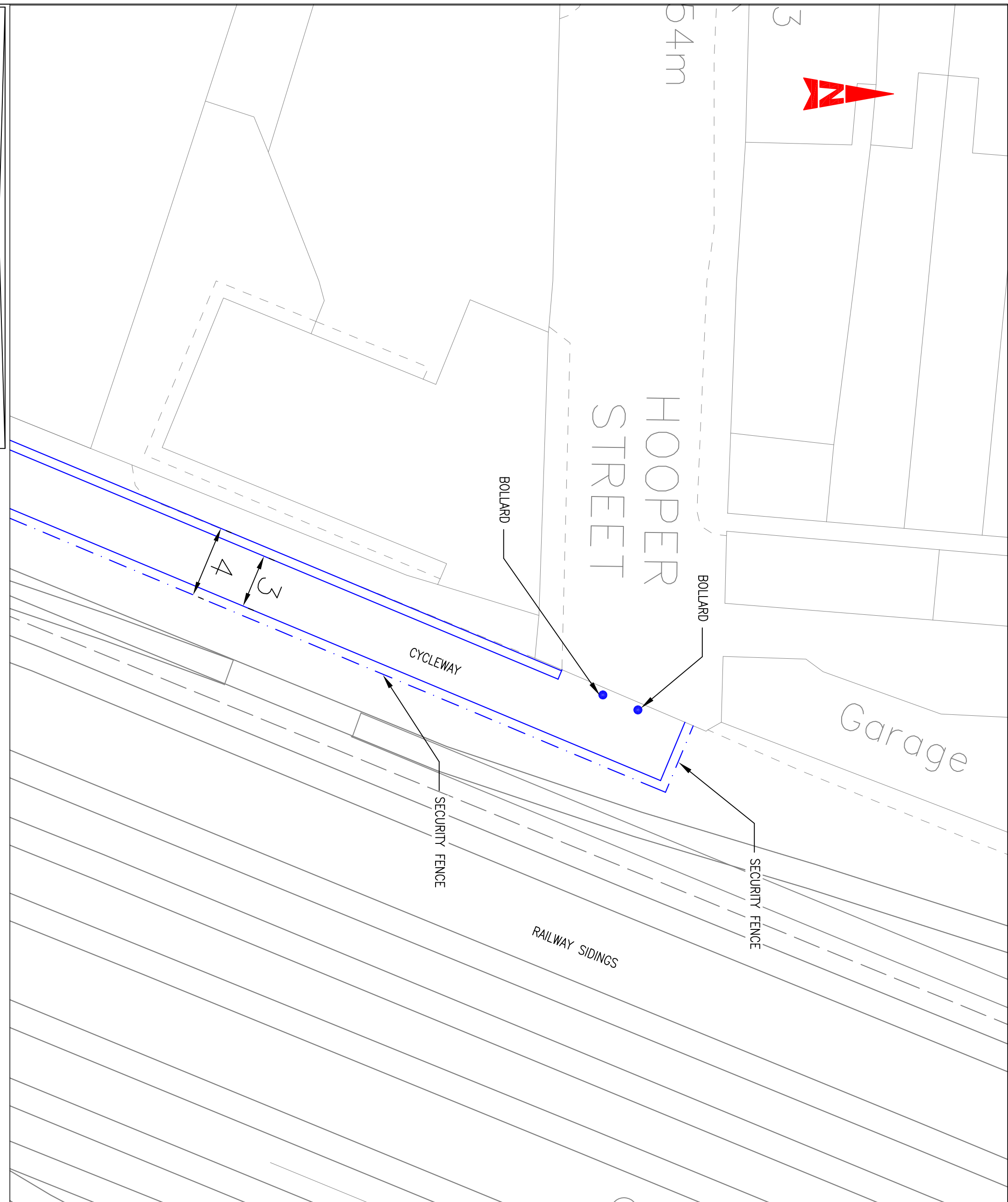


Client  
**Cambridgeshire  
County Council**

Project  
**CHISHOLM TRAIL**

Task  
**PROPOSED BRIDGE OVER RIVER CAM  
GENERAL DETAILS**

Sheet Size	Original Scale	Designed/Drawn	Checked	Authorised
A3	1:500	BW	PB	RLB
Status	Drawing Number	Date	Date	Date
1	5078644/HW/GN/001	10/08/09	08/09	08/09
				Rev
				A



**ATKINS**™

NOTES:  
REFERRED TO IN PARAGRAPH  
3.1.2b

SAFETY, HEALTH AND ENVIRONMENTAL INFORMATION

IN ADDITION TO THE HAZARDS/ISSUES NORMALLY ASSOCIATED WITH THE TYPES OF WORK  
DETAILED ON THIS DRAWING, NOTE THE FOLLOWING SIGNIFICANT RESIDUAL RISKS:  
CONSTRUCTION  
MANUAL HANDLING OF KERBS NOT PERMITTED  
MAINTENANCE/CLEANING  
NONE  
USE  
NONE  
RECOMMISSIONING/DECOMMISSIONING  
MANUAL HANDLING OF KERBS NOT PERMITTED

Rev	Description	By	Date	Checked/Date
A	FOR INFORMATION		09/09	RLB
A	ORIGINAL ISSUE	BW	09/09	PB RLB

**Atkins Limited**  
Consulting Engineers,  
Wellbrook Court  
Girton Road  
Cambridge  
CB3 0NA

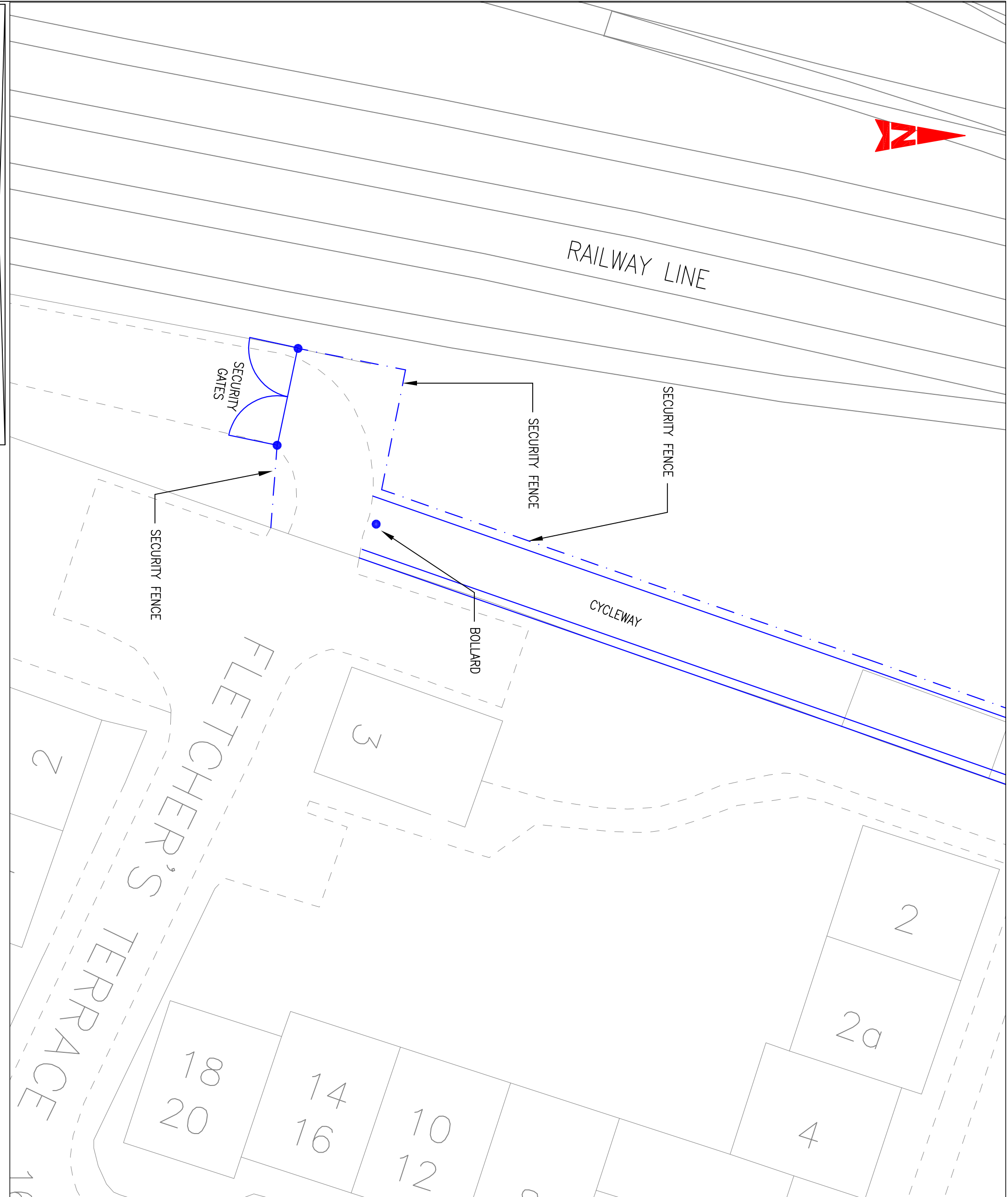
Tel: (01223) 276002  
Fax: (01223) 277529  
www.atkinsglobal.com



Project  
CHISHOLM TRAIL

Title  
CONNECTION TO HOOPER STREET  
FROM RAILWAY LAND  
GENERAL DETAILS

Sheet Size	Original Scale	Designed/Drawn	Checked	Authorised
A3	1:200	BW	PB	RLB
Issue	1	Date 10/09/09	Date 09/09	Date 09/09
Drawing Number	5078644/HW/GN/002	Rev		A



**ATKINS**<sup>TM</sup>

NOTES:  
REFERRED TO IN PARAGRAPH  
3.1.1.0

SAFETY, HEALTH AND ENVIRONMENTAL INFORMATION  
IN ACCORD TO THE HAZARD/ASBESTOS LEGISLATION ASSOCIATED WITH THE TYPES OF WORK  
DETAILED ON THIS DRAWING, NOTE THE FOLLOWING SIGNIFICANT RESIDUAL RISKS:  
CONSTRUCTION  
MANUAL HANDLING OF KERBS NOT PERMITTED  
MAINTENANCE/CLEANING  
NONE  
USE  
NONE  
RECOMMISSIONING/REDEMPTION  
MANUAL HANDLING OF KERBS NOT PERMITTED

Rev	Description	By	Date	Chk'd	Date
A	FOR INFORMATION	BW	09/09	PB	09/09
A	ORIGINAL ISSUE	BW	09/09	PB	09/09

Rev	Description	By	Date	Chk'd	Date
A	FOR INFORMATION	BW	09/09	PB	09/09
A	ORIGINAL ISSUE	BW	09/09	PB	09/09

**Atkins Limited**  
Consulting Engineers,  
Wellbrook Court  
Girton Road  
Cambridge  
CB3 0NA  
Tel: (01223) 276002  
Fax: (01223) 277529  
www.atkinsglobal.com

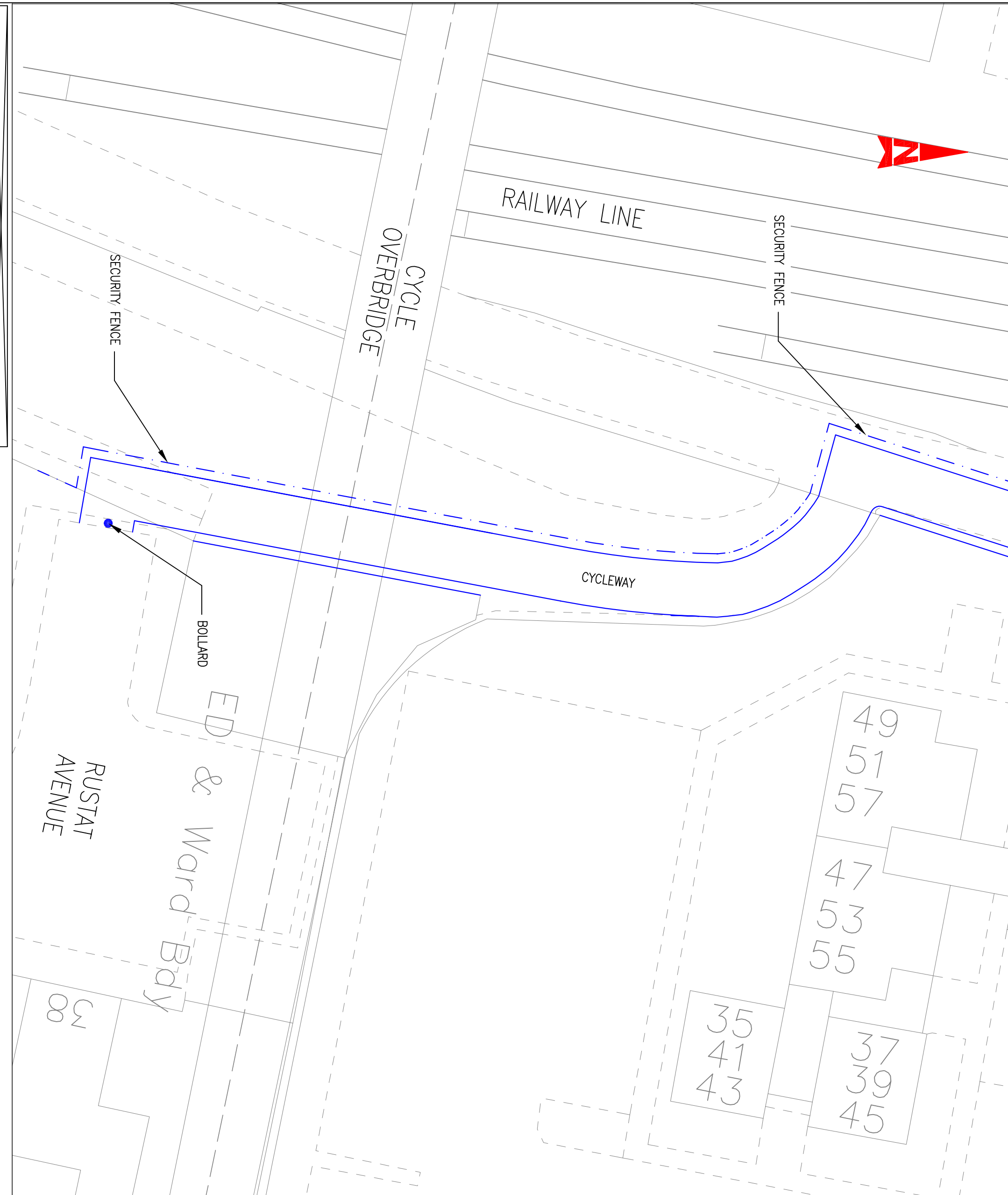


Client  
Cambridgeshire  
County Council

Project  
CHISHOLM TRAIL

Sheet Size	Original Scale	Designed/Drawn	Checked	Authorised
A3	1:200	BW	PB	RLB
Status	Drawing Number	Date	Date	Date
1	5078644/HW/GN/003	10/08/09	09/09	08/09

Title  
ACCESS TO RAILWAY LAND  
AT FLETCHER'S TERRACE  
GENERAL DETAILS



**ATKINS**<sup>TM</sup>

NOTES:  
REFERRED TO IN PARAGRAPH  
3.1.1.0

**SAFETY, HEALTH AND ENVIRONMENTAL INFORMATION**

IN ADDITION TO THE HAZARD ASSES USUALLY ASSOCIATED WITH THE TYPES OF WORK  
DETAILED ON THIS DRAWING, NOTE THE FOLLOWING SPECIFIC RESIDUAL RISKS:  
CONSTRUCTION  
MANUAL HANDLING OF KERBS NOT PERMITTED  
MAINTENANCE/CLEANING  
NONE  
USE  
NONE  
RECOMMISSIONING/REDEMPTION  
MANUAL HANDLING OF KERBS NOT PERMITTED

Rev	Description	By	Date	CHK'd	Auth
A	FOR INFORMATION	BW	09/09	PB	RLB
A	ORIGINAL ISSUE	BW	09/09	PB	RLB

**Atkins Limited**  
Consulting Engineers,  
Wellbrook Court  
Girton Road  
Cambridge  
CB3 0NA  
Tel: (01223) 276002  
Fax: (01223) 277529  
www.atkinsglobal.com



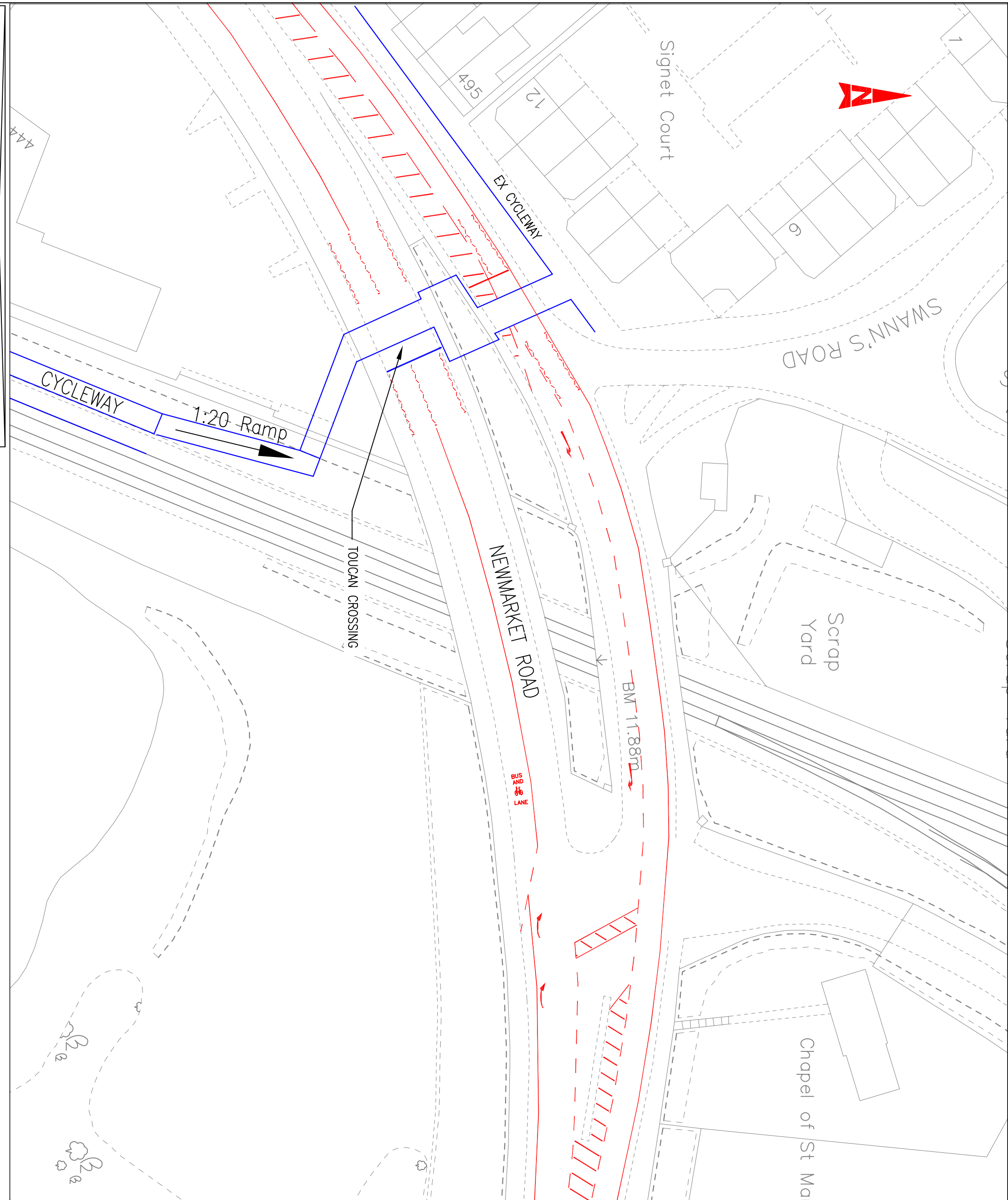
Client  
**Cambridgeshire  
County Council**

Project  
**CHISHOLM TRAIL**

Title  
**CONNECTION TO RAILWAY LAND  
AT RUSTAT AVENUE  
GENERAL DETAILS**

Sheet Size	Original Scale	Designed/Drawn	Checked	Authorised
A3	1:200	BW	PB	RLB
Issue	Drawing Number	Date	Date	Date
1	5078644/HW/GN/004	11/08/09	09/09	08/09





**ATKINS**™

NOTES:  
 REFERRED TO IN PARAGRAPH  
 3.1.2.c AND 3.1.2.d

**SAFETY, HEALTH AND ENVIRONMENTAL INFORMATION**

IN ADDITION TO THE HAZARDS LISTED NORMALLY ASSOCIATED WITH THE TYPES OF WORK  
 DETAILLED ON THIS DRAWING, NOTE THE FOLLOWING SPECIFIC RESIDUAL RISKS:  
 CONSTRUCTION  
 MANUAL HANDLING OF KERBS NOT PERMITTED  
 MAINTENANCE/CLEANING  
 NONE  
 NONE  
 RECOMMISSIONING/DECOMMISSIONING  
 MANUAL HANDLING OF KERBS NOT PERMITTED

Rev	Description	By	Date	CHK'd	Auth
A	FOR INFORMATION	BW	09/09	PB	RLB
A	ORIGINAL ISSUE	BW	09/09	PB	RLB

**Atkins Limited**  
 Consulting Engineers,  
 Wellbrook Court  
 Giron Road  
 Cambridge  
 CB3 0NA

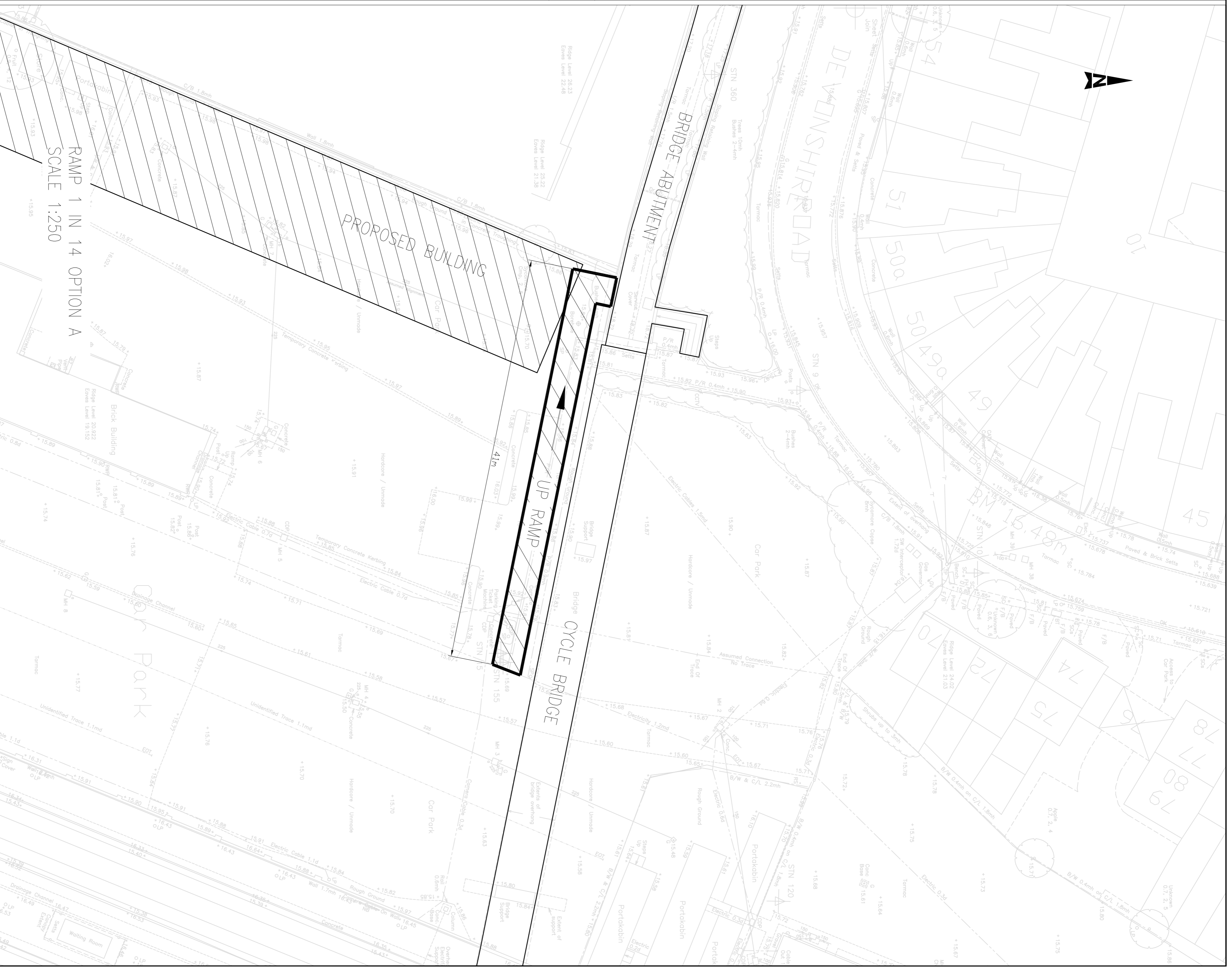
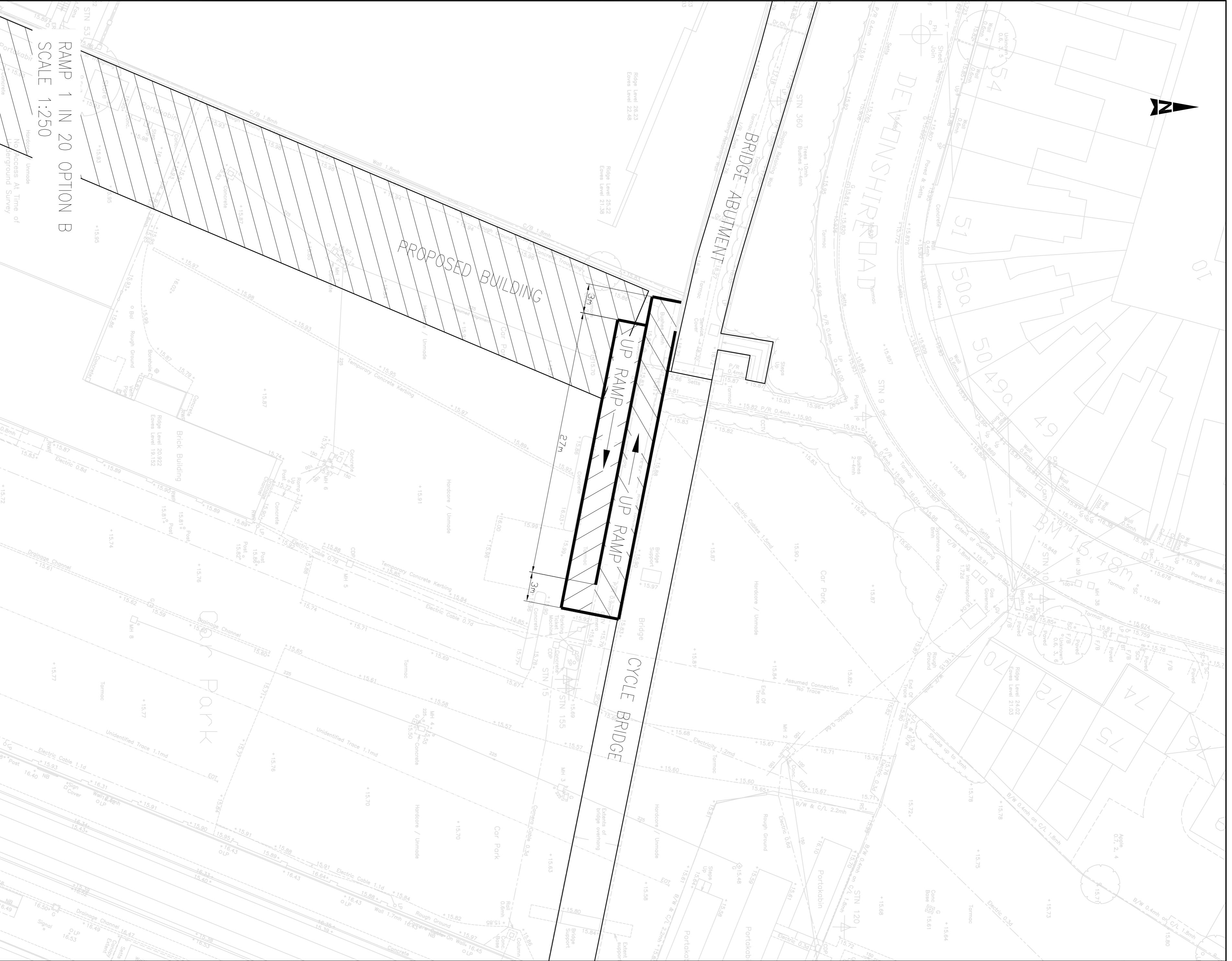
Tel: (01223) 276002  
 Fax: (01223) 277529  
 www.atkinsglobal.com



Project: CHISHOLM TRAIL

Title: NEWMARKET ROAD RAMP  
 AND TOUCAN CROSSING  
 GENERAL DETAILS

Sheet Size	Original Scale	Designed/Drawn	Checked	Authorised
A3	1:500	BM	PB	RLB
Issue	1	Date 11/09/09	Date 09/09	Date 09/09
Drawing Number	5078644/HW/GN/006	Rev		A



NOTES:  
 REFERRED TO IN PARAGRAPH 3.1.1.0

SAFETY, HEALTH AND ENVIRONMENTAL INFORMATION	Rev	Description	By	Date	Chk'd	Auth	Rev	Purpose of Issue
IN ADDITION TO THE HAZARDS/RISKS NORMALLY ASSOCIATED WITH THE TYPE OF WORK DETAIL ON THIS DRAWING, NOTE THE FOLLOWING SIGNIFICANT RESIDUAL RISKS								
CONSTRUCTION								
MAINTENANCE/CLEANING								
USE								
DECOMMISSIONING/DEMOLITION								

Client

Cambridgeshire County Council	Cambridgeshire Highways Design and Engineering Services 2/3 Welbroke Court Gordon Road Cambridge CB3 0NA cambridgeshirehighways@ccskhsjdsjdsj.com	Project <b>CHISHOLM TRIAL CYCLEWAY</b>	Title <b>OPTIONS FOR CYCLEWAY ROUTE RAMP CONNECTION TO CYCLE BRIDGE AT STATION</b>
----------------------------------	--	---	---

Scale	Drawing Number	Rev
1:250	5078644/HW/SK/013	B